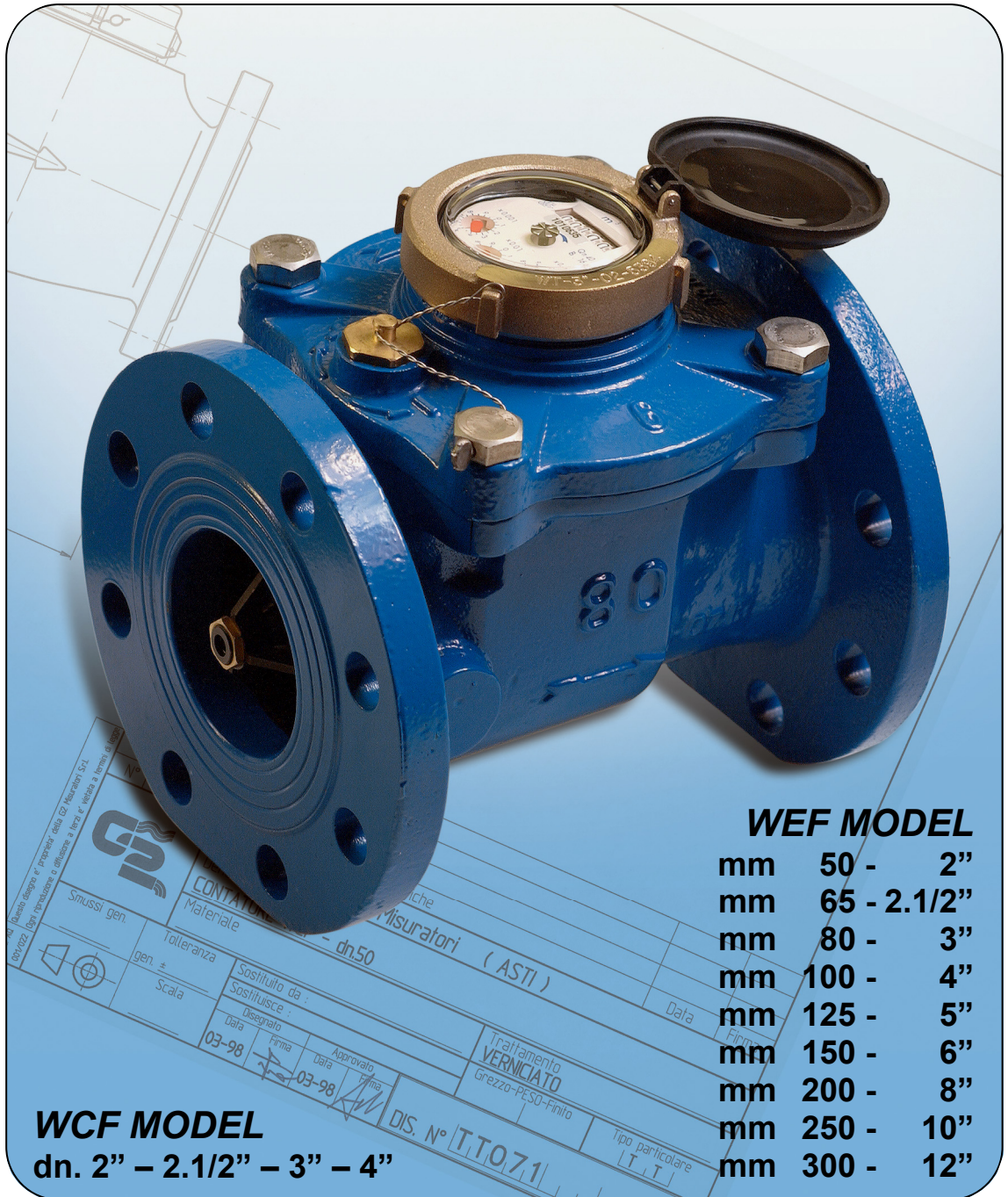


G2 misuratori

water meters



WOLTMANN



- In-line turbine woltmann water meter, direct reading
- Various nominal pressure available upon request (PN 10 - PN 16 - PN 25 - PN 40)
- WEF REMOVABLE model dn. from 2" to 12" for cold water up to 50°C
- WEC REMOVABLE model for hot water up to 130°C available on request
- Measuring insert replaceable without removing the water meter from the pipeline
- Dry dial (only the impeller in contact with water) can be used for hard, turbid and muddy waters
- WCF CLOSED TYPE model dn. from 2" to 4" available on request
- Hydraulic performances of all models according to the requirements of EEC directive n. 75/33; on request can be sealed with EEC official mark
- All models **only pre-arranged** or equipped with an impulse-emitting device are available on request

WOLTMANN

removable model for cold water up to 50°C

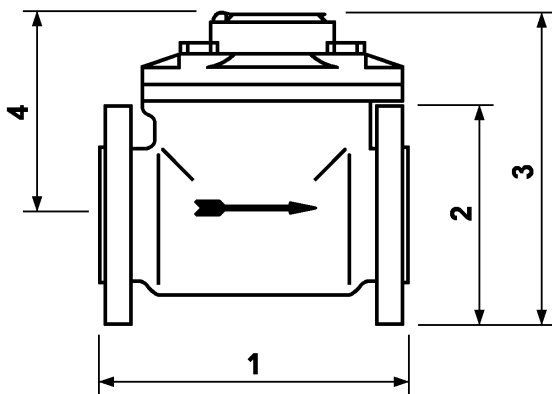
- WEF – 50 mm. – 2"
- WEF – 65 mm. – 2.1/2"
- WEF – 80 mm. – 3"
- WEF – 100 mm. – 4"
- WEF – 125 mm. – 5"
- WEF – 150 mm. – 6"
- WEF – 200 mm. – 8"
- WEF – 250 mm. – 10"
- WEF – 300 mm. – 12"

closed type -non removable- for cold water up to 50°C

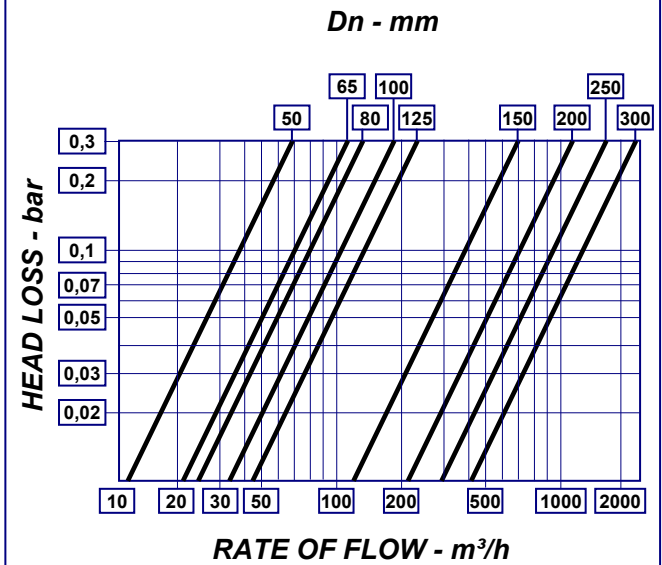
- WCF – 50 mm. – 2"
- WCF – 65 mm. – 2.1/2"
- WCF – 80 mm. – 3"
- WCF – 100 mm. – 4"

Hydraulic performances and overall dimensions

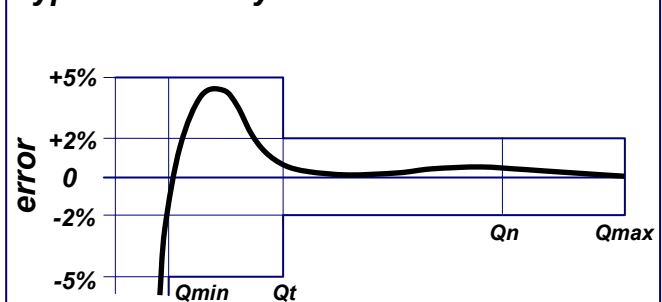
	mm-inches								
	50-2	65-2.1/2	80-3	100-4	125-5	150-6	200-8	250-10	300-12
Qmax: maximum flow rate for short period (m ³ /h)	30	50	80	120	200	300	500	800	1200
Qn: nominal flow rate (m ³ /h)	15	25	40	60	100	150	250	400	600
Qt: transitional flow rate with error ±2% (m ³ /h)	2	4	4	6	6	12	12	15	15
Qmin: minimum flow rate with error ±5% (m ³ /h)	0,55	0,6	0,7	1,2	2,5	3	5	10	12
Starting flow (m ³ /h)	0,2	0,25	0,25	0,3	0,6	1,7	1,8	3	9
1) Overall length (mm)	200	200	225	250	250	300	350	450	500
2) Diameter (mm)	165	186	200	220	250	283	340	406	460
3) Height with closed lid (mm)	214	234	234	250	275	310	338	438	465
4) Height centre line to top closed lid (mm)	144	144	144	144	144	180	180	235	235
Weight (kg)	12	14,5	15,5	19	26	35	47	75	95



Head loss curve



Typical accuracy curve



Continuous development of our products may necessitate changes in details without prior notice.



G2 misuratori s.r.l.
14100 ASTI (AT) – ITALY
Via San Martino, 38

Telephone +39.0141.727749 - Telefax +39.0141.702280
E-mail: info@g2misuratori.it – Http://www.g2misuratori.it