

Woltmag hot water with vertical propeller

Woltex hot water with horizontal propeller

- ▶ Robustness
- ▶ Communication
- ▶ Endurance



▶ Woltex DN50



▶ Woltmag DN50

These products are part of the range of Woltmann technology Actaris meters. They are designed for hot water metering and overheated hot water within the limits of temperature and pressure indicated below.

Models

- ▶ Woltmag
 - Max. admissible temperature 130°C
 - Max. admissible pressure 20 bar
 - DN: 50, 65, 80 and 100
- ▶ Woltex
 - Max. admissible temperature 130°C
 - Max. admissible pressure 20 bar
 - DN: 50, 65, 80, 100, 125, 150, 200 and 250

Materials used

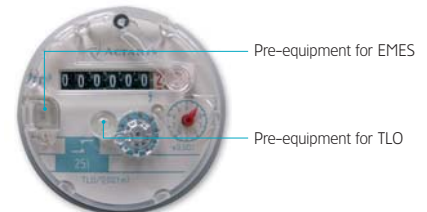
- Casing in grey iron protected internally and externally against corrosion.
- Internal parts: plastics designed especially to resist to high temperatures.

Register

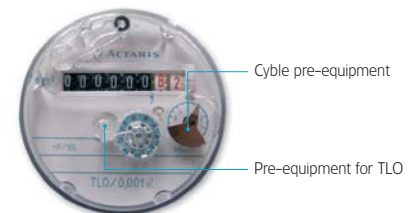
- 2 different pre-equipment available:
- TLO and Reed pulser EMES emitter (WEC...P16 and WVC...P16)
 - TLO and Cyble pre-equipment (WEC...TR and WVC...TR)

Caution

- WEC...P16 and WVC...P16 are delivered with EMES emitter assembled on the meter.
- WEC...TR and WVC...TR are limited to 110°C in case of Cyble pulser equipment. Choose WEC...P16 or WVC...P16 with built-in Reed pulser EMES for high temperature/heating applications.



▶ Register for WEC...P16 and WVC...P16



▶ Register for WEC...TR and WVC...TR

Accessories

- Filters
- Flow straighteners
- Communication devices

Important notice

In case of temperature higher than 90°C, it is recommended to consult the local safety regulation related to the acceptance of GREY IRON for the envelopes of containers. For this purpose, we indicate below the volume of the envelope of these products.

DN	50	65	80	100/125	150	200	250
Volume (dm ³)	1.7	3.9	4.3	7.7	8	13.5	22

Metrological Characteristics

Meter	Woltmag - WVC...TR					Woltmag - WVC...P16			
Nominal diameter (DN)	mm	50	65	80	100	50	65	80	100
	inches	2"	2" 1/2	3"	4"	2"	2" 1/2	3"	4"
Maximum flow rate (Q _{max})	m ³ /h	30	50	80	120	30	50	80	120
Nominal flow rate (Q _n)	m ³ /h	15	25	40	60	15	25	40	60
Accuracy ±2% from	m ³ /h	2.5	4	6	10	2.5	5	7	10
Accuracy ±5% from	m ³ /h	0.6	1	1.6	2.5	0.6	0.8	0.8	1
Minimum scale interval graduated	L		1				1		
Minimum scale interval read	L		0.5				0.5		
Indicating range	m ³		10 ⁶				10 ⁶		

Meter	Woltex WEC...TR								
Nominal diameter (DN)	mm	50	65	80	100	125	150	200	250
	inches	2"	2" 1/2	3"	4"	5"	6"	8"	10"
Maximum flow rate (Q _{max})	m ³ /h	30	50	80	120	200	300	500	800
Nominal flow rate (Q _n)	m ³ /h	15	25	40	60	100	150	250	400
Accuracy ±2% from	m ³ /h	3	5	8	12	20	30	50	80
Accuracy ±5% from	m ³ /h	1.2	2	3.2	4.8	8	12	20	32
Minimum scale interval graduated	L			1				10	
Minimum scale interval read	L			0.5				5	
Indicating range	m ³			10 ⁶				10 ⁷	

Meter	Woltex WEC...P16								
Nominal diameter (DN)	mm	50	65	80	100	125	150	200	250
	inches	2"	2" 1/2	3"	4"	5"	6"	8"	10"
Maximum flow rate (Q _{max})	m ³ /h	30	50	80	120	200	300	500	800
Nominal flow rate (Q _n)	m ³ /h	15	25	40	60	100	150	250	400
Accuracy ±2% from	m ³ /h	3	5	8	15	20	25	41.6	66
Accuracy ±5% from	m ³ /h	1.2	2	3.2	8	8	10.5	18	30
Minimum scale interval graduated	L			1				10	
Minimum scale interval read	L			0.5				5	
Indicating range	m ³			10 ⁶				10 ⁷	

Dimensions

Nominal diameter (DN)	mm	50	65	80	100	125	150	200	250
Woltmag - WVC...TR	(length)	mm	250	300	350	400	-	-	-
Woltmag - WVC...P16	(length)	mm	270	300	300	360	-	-	-
Woltex WEC...TR and WEC...P16	(length)	mm	200	200	200	250	250	300	350



For more information, please contact your local agency.



Actaris

11, boulevard Pasteur

67500 Haguenau - France

For more information, see www.actaris.com

tel +33 3 88 90 63 00

fax +33 3 88 73 23 20