

KIMMON MFG.CO.LTD

POSITIVE DISPLACEMENT DIAPHRAGM TYPE

Aluminum Case  
SK25 Domestic  
Gas Meter

KIMMON MANUFACTURING CO., LTD.

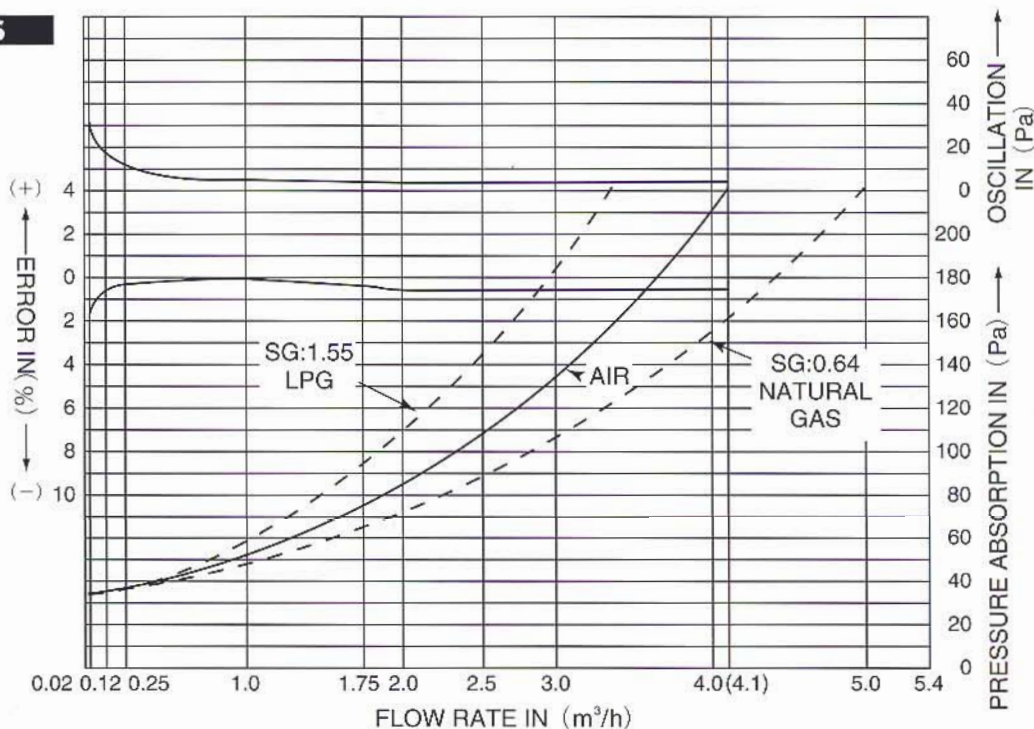
# Aluminum Case SK25 Domestic Gas Meter

With a history dating back to 1904, KIMMON'S long experience and time-tested high technology are producing high performance gas meters at 20 different factories. The SK25 gas meter was developed and designed by our very own engineers using the highest level of technology available.

## FEATURES

- Improved performance to meet OIML Standard.
- Available for LNG, LPG, and other gases.
- The diaphragm control plate has been redesigned to achieve greater accuracy.
- Larger, easier-to-read numerals eliminate misreadings.
- Equipped with a special pilot-flow checker that can monitor a very small flow.
- Connection is interchangeable with PK-III series gas meters.
- Increased durability against condensates with radial slide valve.
- Reliable accuracy and high durability for long service life.
- Easy maintenance and low repair cost.
- Grommet-type sealing completely prevents gas leaks from the indicator box.

## PERFORMANCE CURVES



## SPECIFICATIONS

CAPACITY	AIR	NATURAL GAS (SG:0.64)	PROPANE GAS (SG:1.55)
at 220 Pa {20 mmH <sub>2</sub> O} pressure drop	4.1 m <sup>3</sup> /h	5.0 m <sup>3</sup> /h	3.3 m <sup>3</sup> /h
at 150 Pa {15 mmH <sub>2</sub> O} pressure drop	3.2 m <sup>3</sup> /h	3.9 m <sup>3</sup> /h	2.6 m <sup>3</sup> /h

Max. working pressure : 10 kPa {1,020mmH <sub>2</sub> O}	Starting flow rate : 1 L/Hr.
Max. case pressure : 20 kPa {2,040mmH <sub>2</sub> O}	Max. registration : 9,999.999 m <sup>3</sup>
Cyclic volume/rev. : 0.7 L	Min. unit of index : 0.2 L

### Aluminum Casing

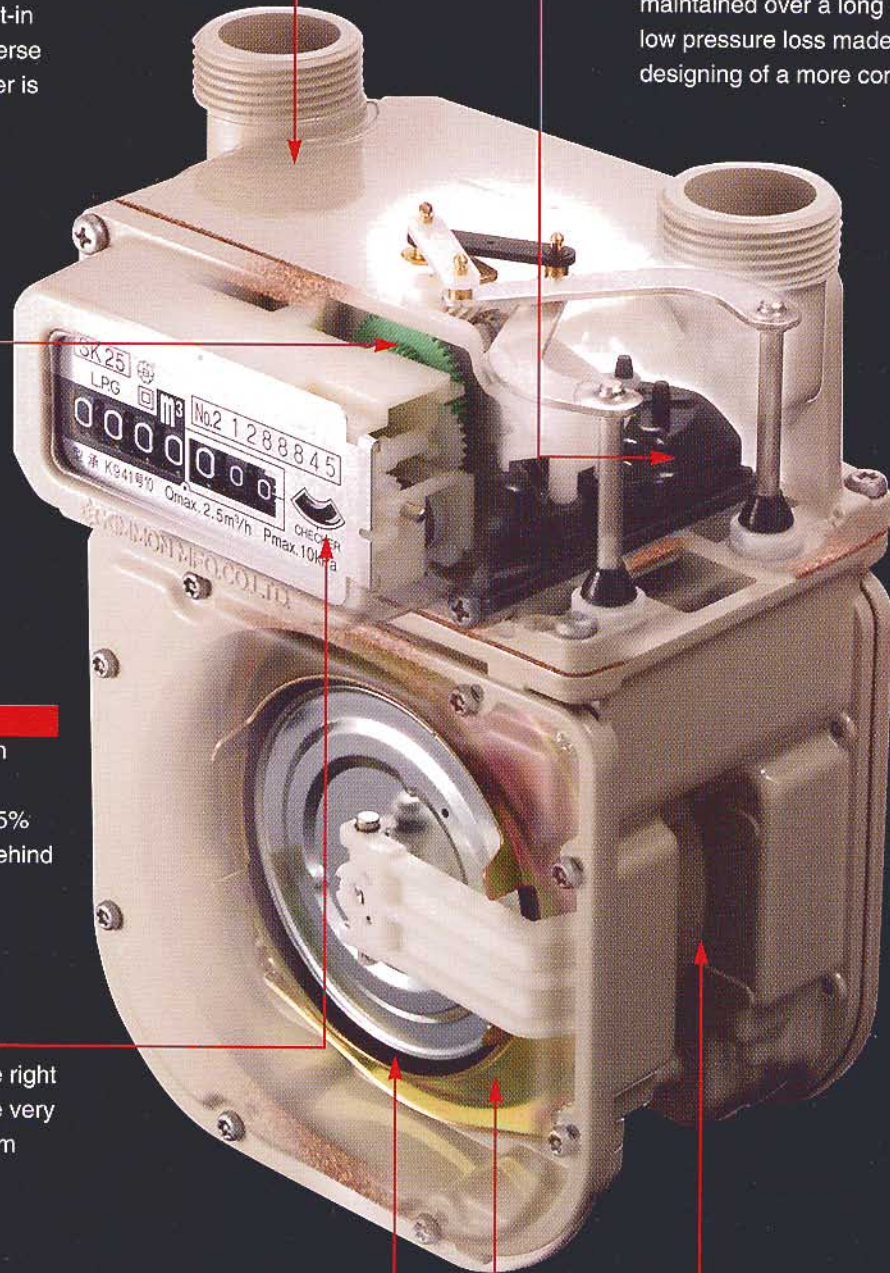
The top casing of die-cast aluminum alloy is lightweight and durable. The spuds are integrated with the top casing to strengthen them against bending and torsion and assure meter connections in which threads will not gall or seize.

### Reverse Flow Stopper

The reverse flow stopper is a built-in crank mechanism to stop the reverse flow that will occur if the gas meter is installed reversely.

### Valve Mechanism

The movement of the valve is now less affected by adhesion caused by gas impurities, such as tars. It is also minimally affected by freezing, and there is no fear of tilted abrasion. The valve is made of a special compound phenolic resin having self-lubricating properties. Thus, reliable movement can be maintained over a long service life. Its low pressure loss made possible the designing of a more compact gas meter.



### Calibration Gear

Simply by changing the calibration gear, the accuracy curves can be shifted upward or downward in 0.5% stages. The gear is located just behind the indicator.

### Pilot Flow Checker

Pilot flow checker is located at the right side of the indicator to monitor the very small gas flow and the downstream leakage.

### Reinforced Polymer Diaphragm

The diaphragm of highly durable reinforced polymer stands up to all types of gas. The disc-shaped diaphragm is best suited for high speed movements and offers stable performance over a long service life.

### Diaphragm control plate

The diaphragm control plate is a new feature added to achieve higher accuracy.

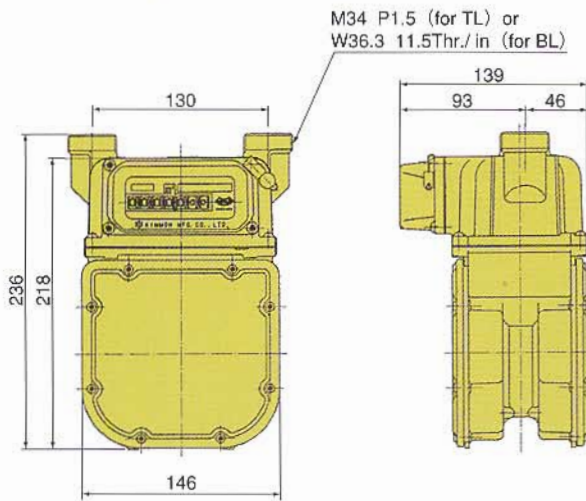
### Aluminum Casing

The main casing is also made of die-cast aluminum alloy, which means more accurate molded dimensions. This facilitates greater assembling accuracy, which in turn provides greater metering accuracy.

# Aluminum Case SK25 Domestic Gas Meter

## DIMENSIONS

### ● MODEL SK25 TL SK25 BL

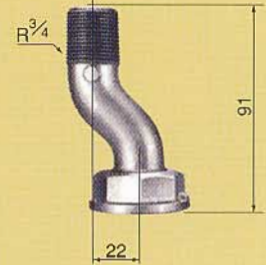
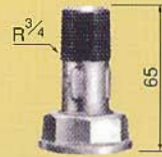


STRAIGHT UNION  
(CODE No. UG3112)  
for SK25 TL

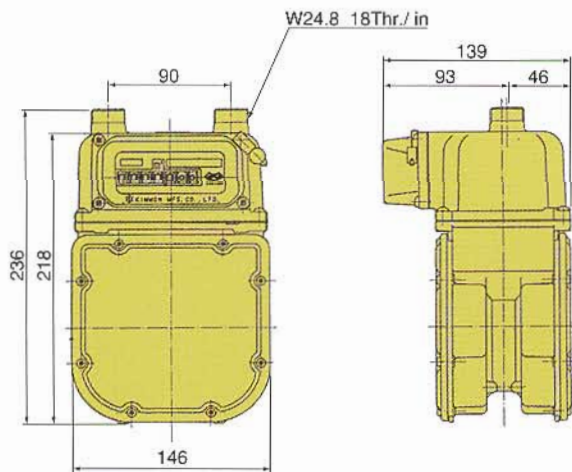
OFFSET UNION  
(CODE No. UG3111)  
for SK25 TL

STRAIGHT UNION  
(CODE No. UG2201)  
for SK25 BL

OFFSET UNION  
(CODE No. UG2211)  
for SK25 BL

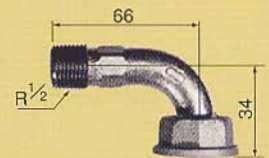


### ● MODEL SK25 UL



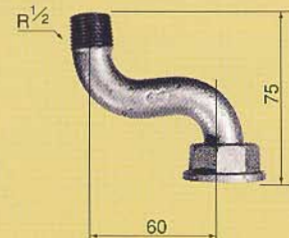
STRAIGHT UNION  
(CODE No. UL5105)

ELBOW UNION  
(CODE No. UL5108)



OFFSET UNION  
(CODE No. UL5106)

OFFSET UNION  
(CODE No. UL5107)



## KIMMON MANUFACTURING CO., LTD.

HEAD OFFICE : 13-1 Ohara-Cho, Itabashi-Ku, Tokyo174-8730, Japan

TELEPHONE : +81 3 5994 7714

FACSIMILE : +81 3 3558 3459